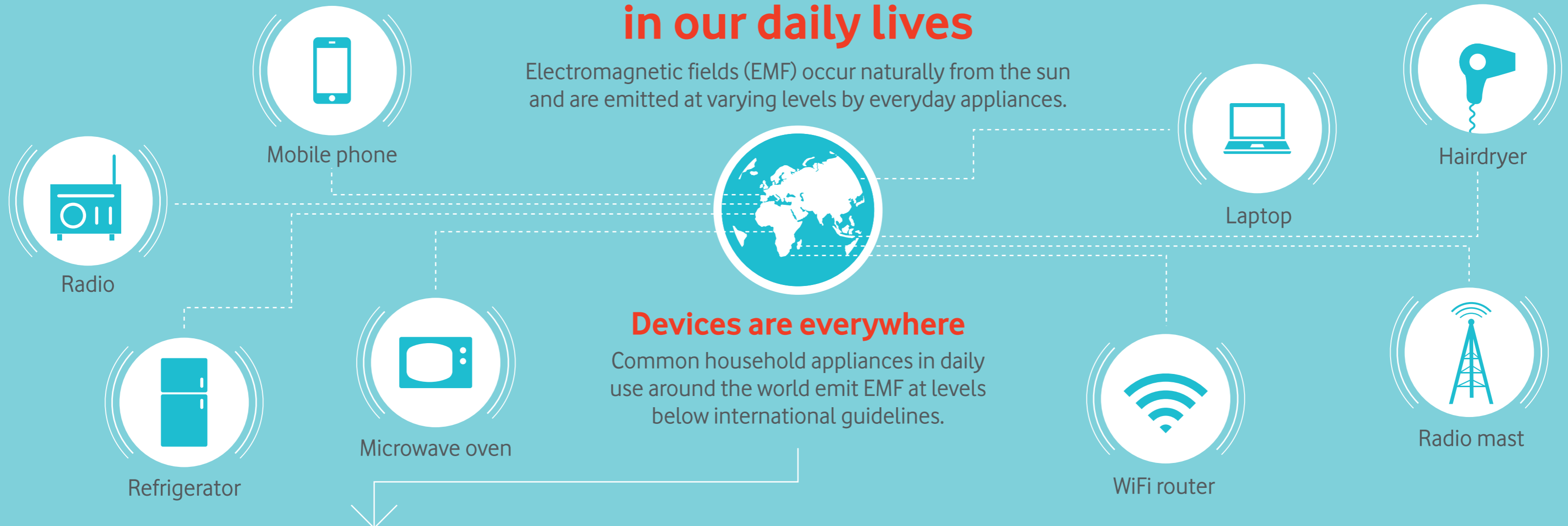


# Electromagnetic fields in our daily lives

Electromagnetic fields (EMF) occur naturally from the sun and are emitted at varying levels by everyday appliances.

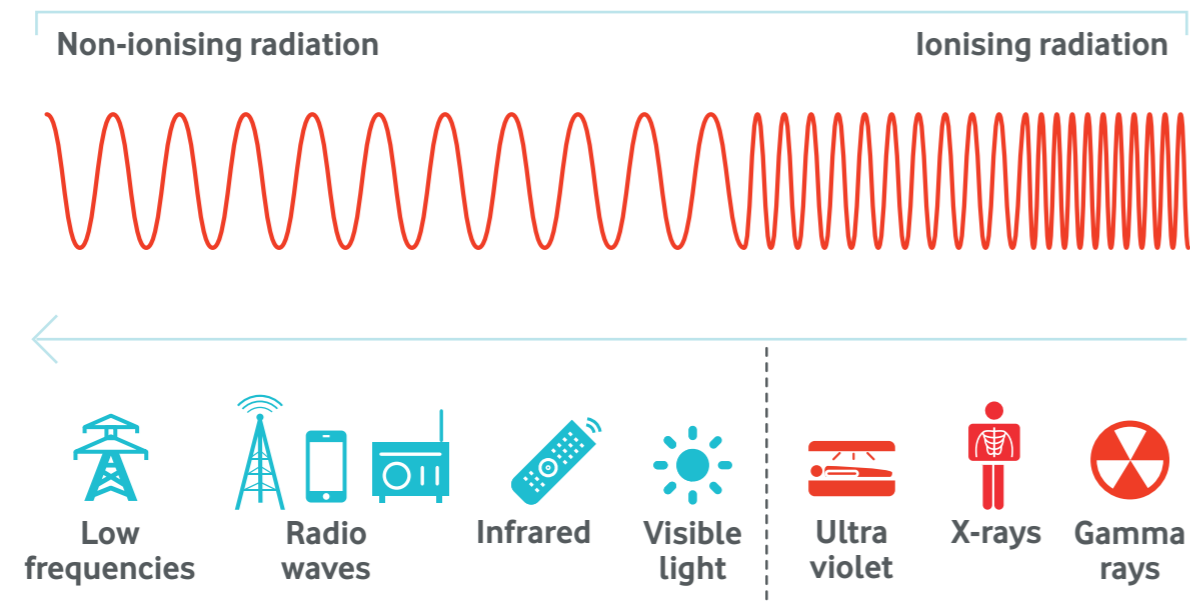


## Devices are everywhere

Common household appliances in daily use around the world emit EMF at levels below international guidelines.

## Monitored

Although these devices operate in the non-ionising part of the spectrum, they still produce heat. To protect people from over-heating, these devices are subject to strict regulations and closely monitored.



## Part of history

In global use for decades, devices that create electromagnetic fields are subject to rigorous testing and include large safety margins.

