

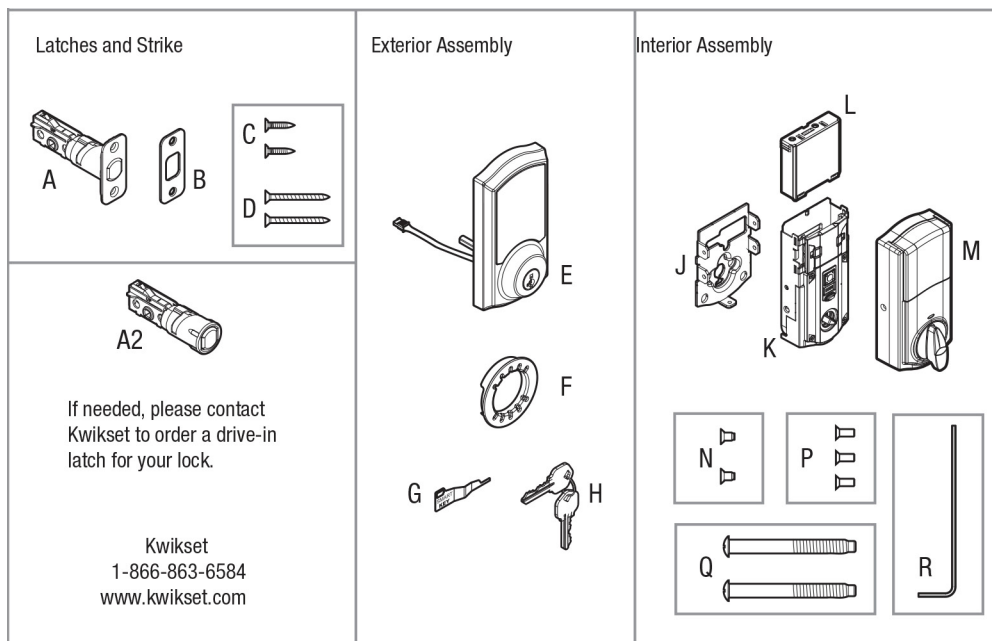
SMART HOME MONITORING



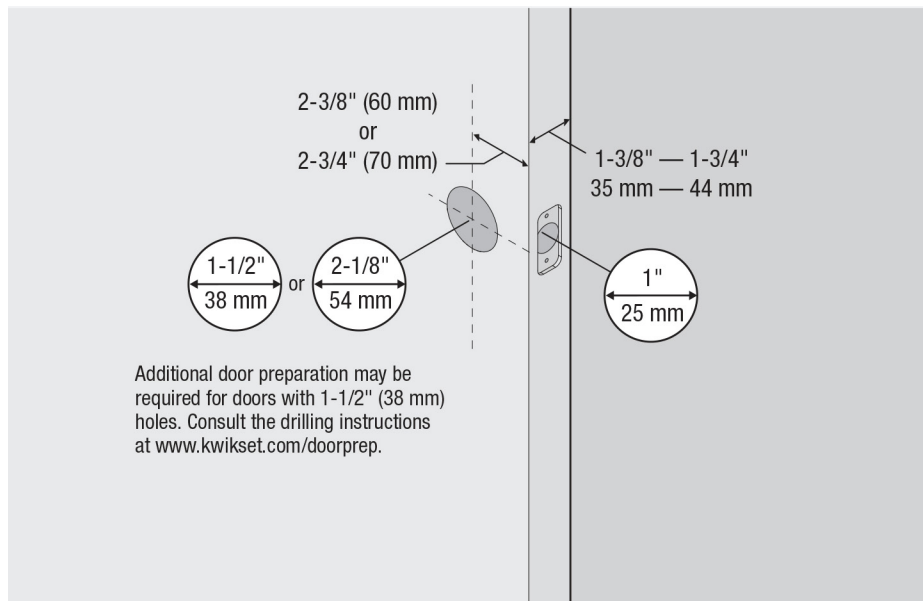
# Door Lock Weiser Touchscreen

Manufacturer's Installation Guide

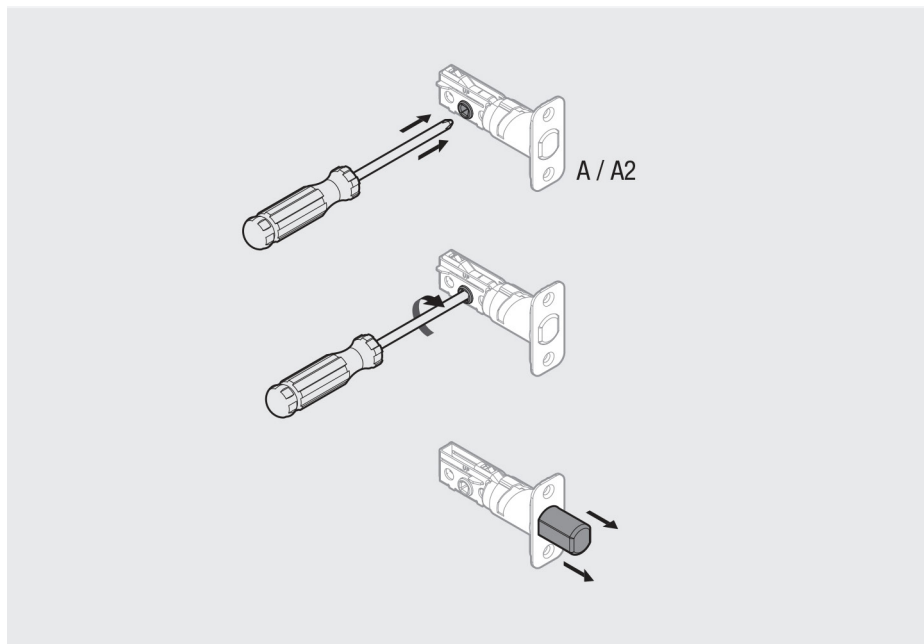
# Parts in the Box



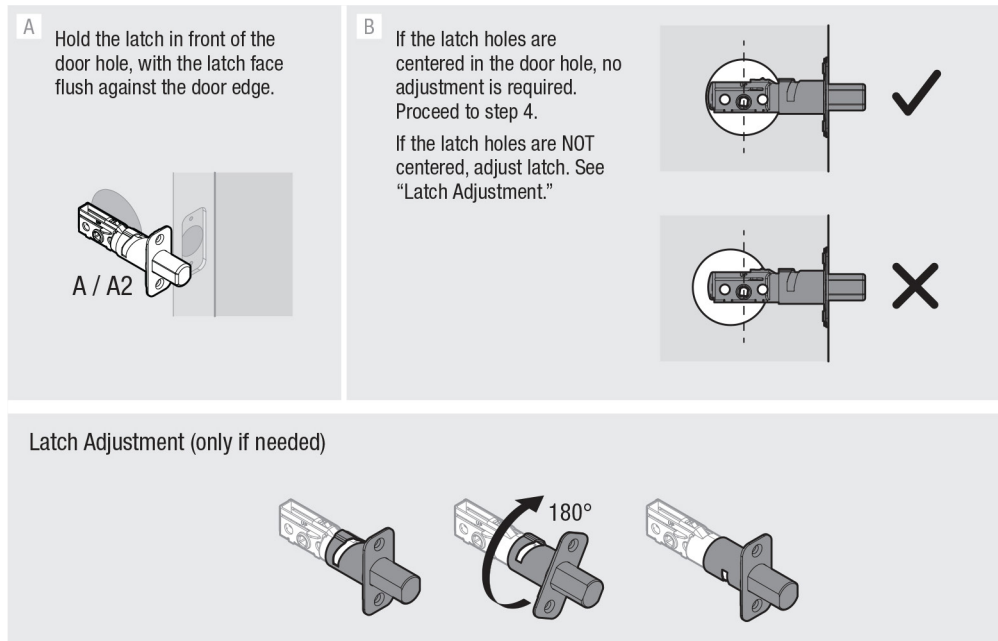
## ① Check dimensions



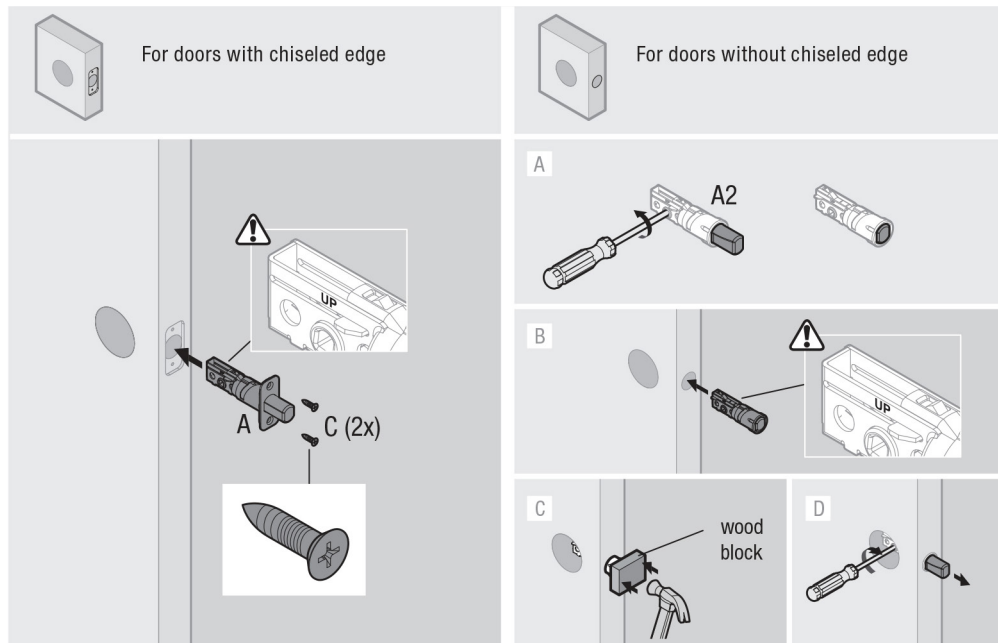
## ② Extend latch bolt



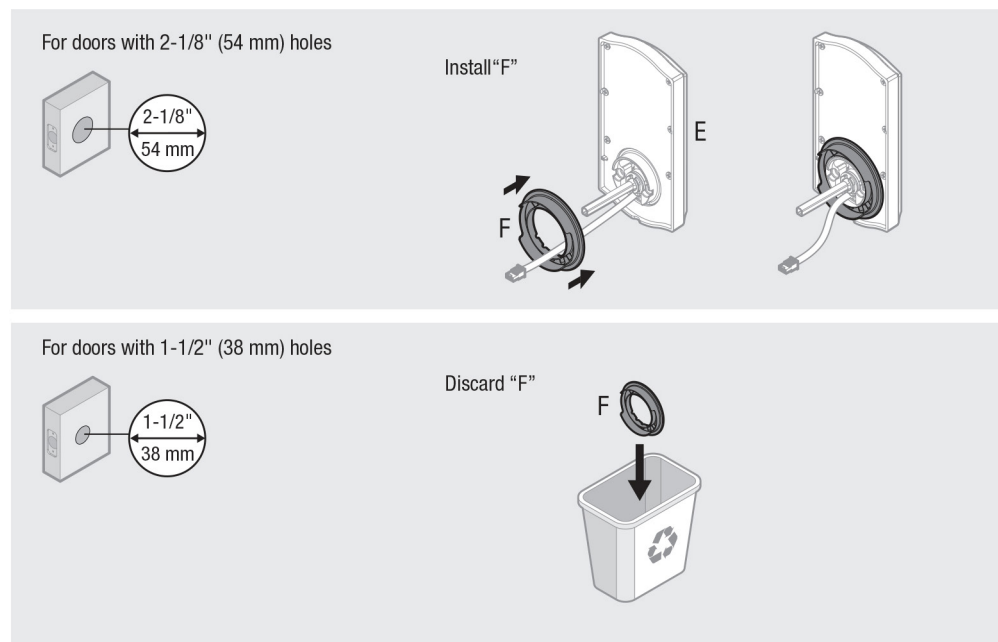
### ③ Adjust the backseat of latch (if needed)



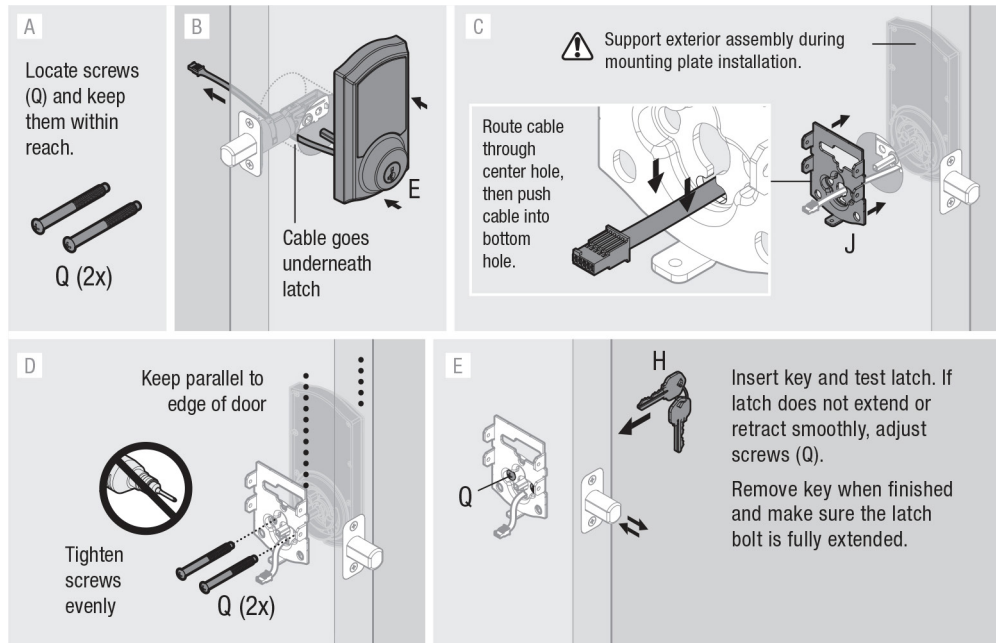
## ④ Install latch



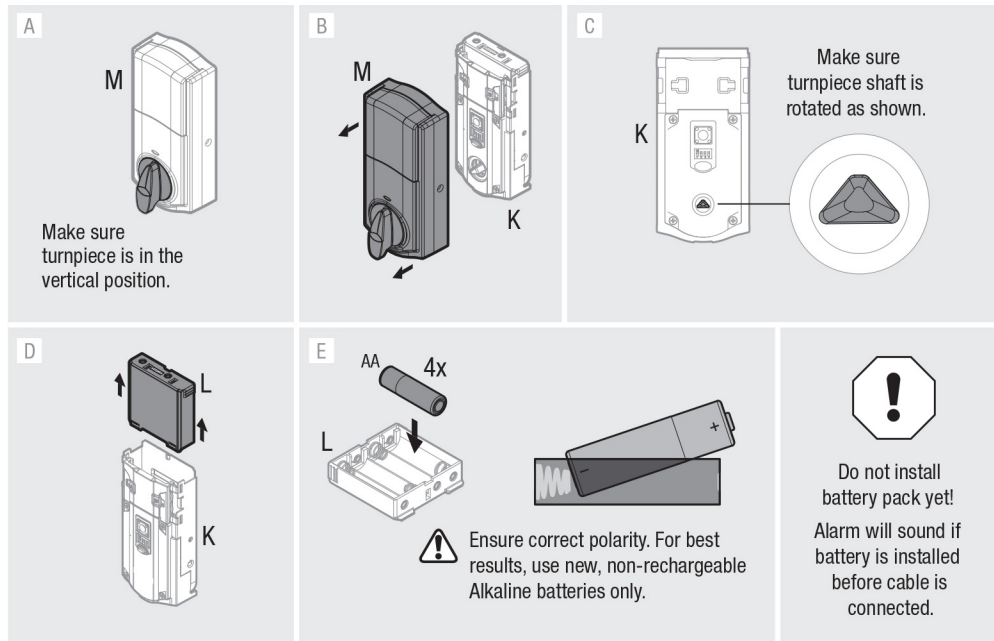
## ⑤ Prepare exterior keypad



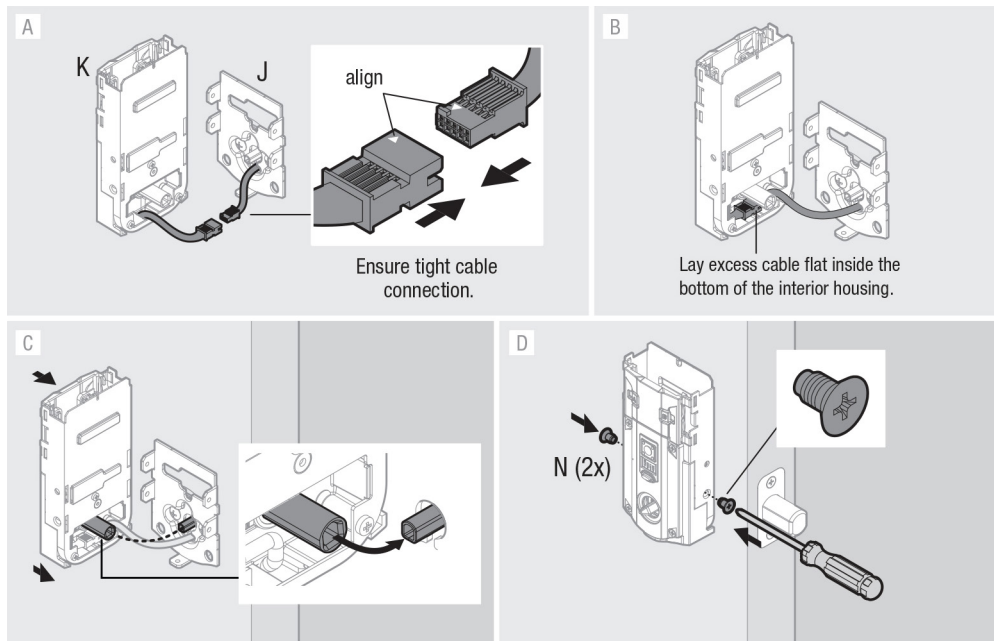
## ⑥ Install keypad and mounting plate



## ⑦ Disassemble interior assembly and load battery pack



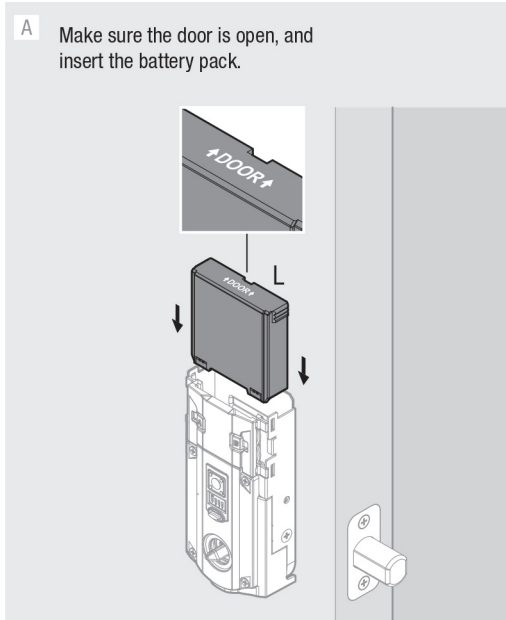
## ⑧ Install interior assembly



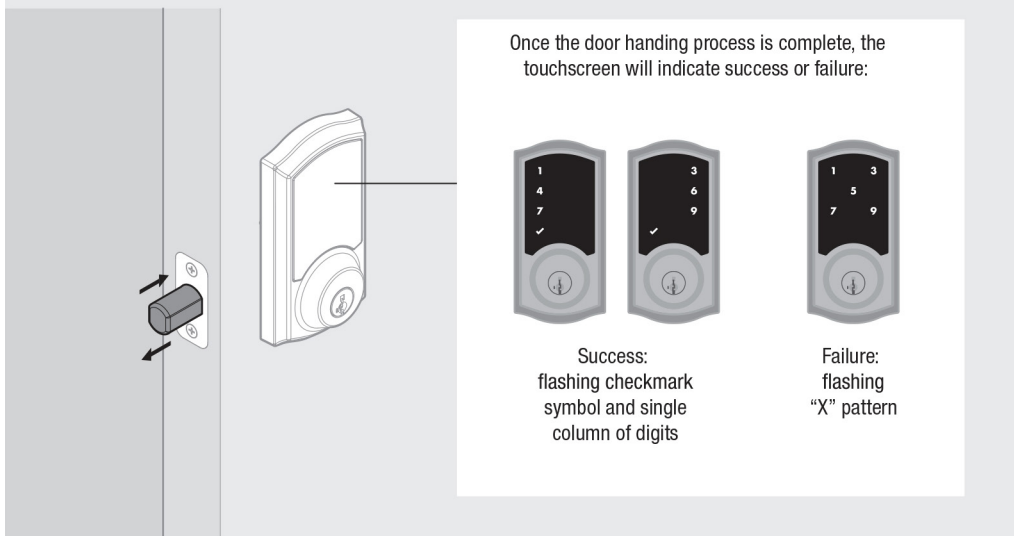


## ⑨ Install battery pack and perform door handing process

A Make sure the door is open, and insert the battery pack.



B After a few seconds, the latch bolt will retract and extend on its own to learn the orientation of the door. This is called the **door handing process**, and it is crucial to lock operation.

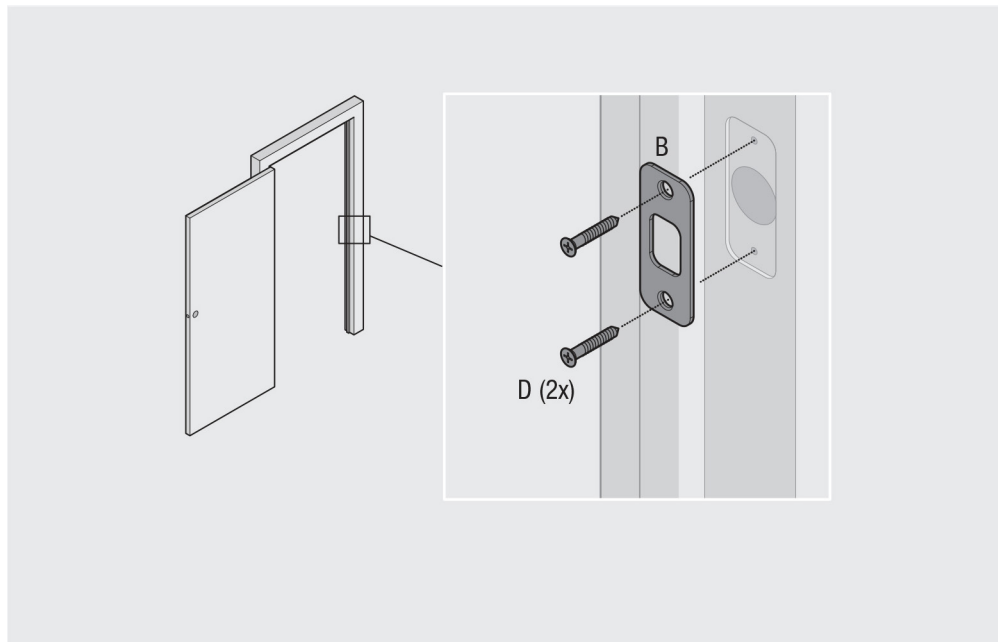


C

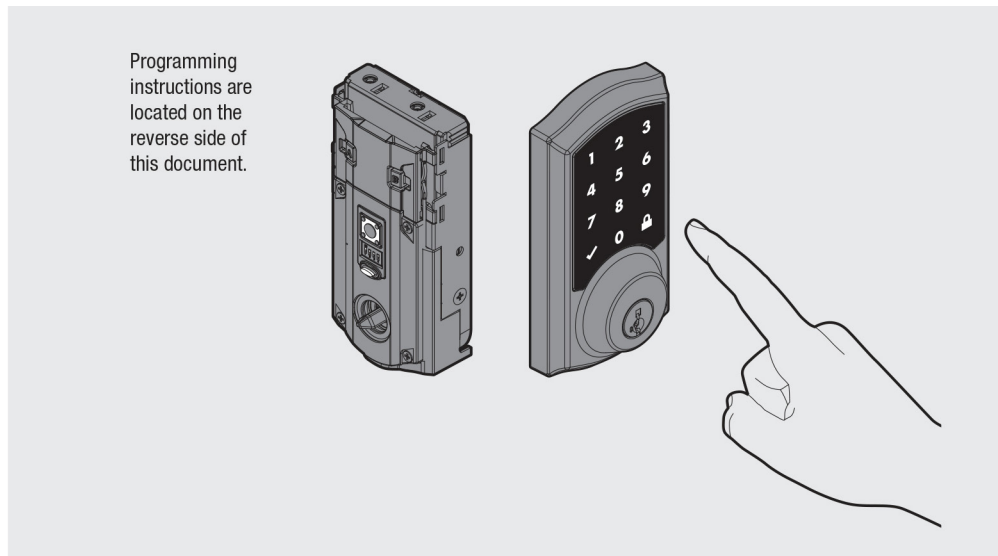
If the touchscreen indicates a failure, attempt this procedure again.

If the door handing process is still unsuccessful after a second attempt, consult the online Troubleshooting Guide, available on the SmartCode 916 product page of [www.kwikset.com](http://www.kwikset.com).

## ⑩ Install strike



## ⑪ Program the lock



## ⑫ Install the battery cover and re-key the lock

